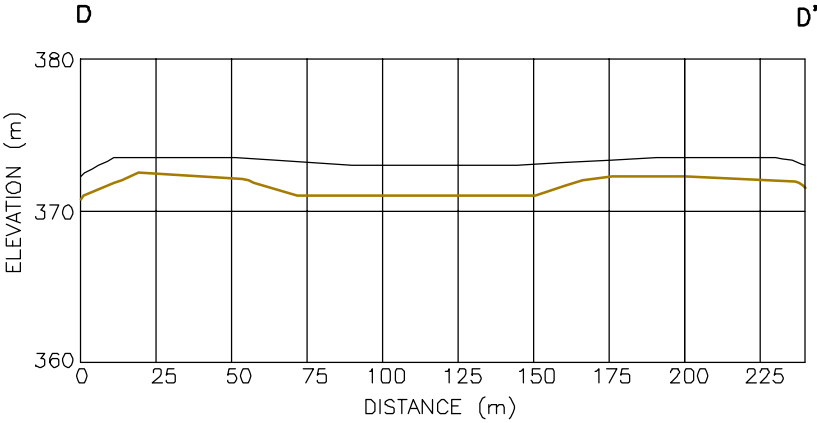
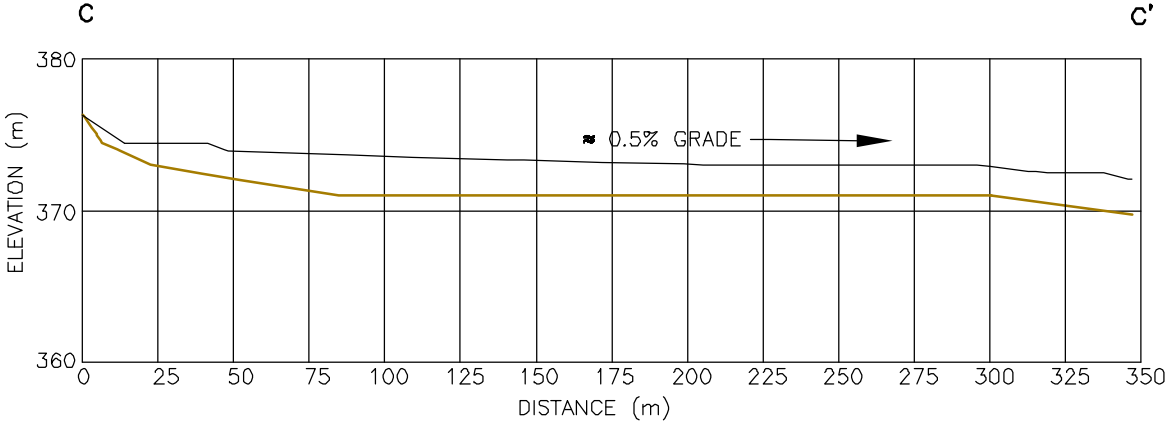
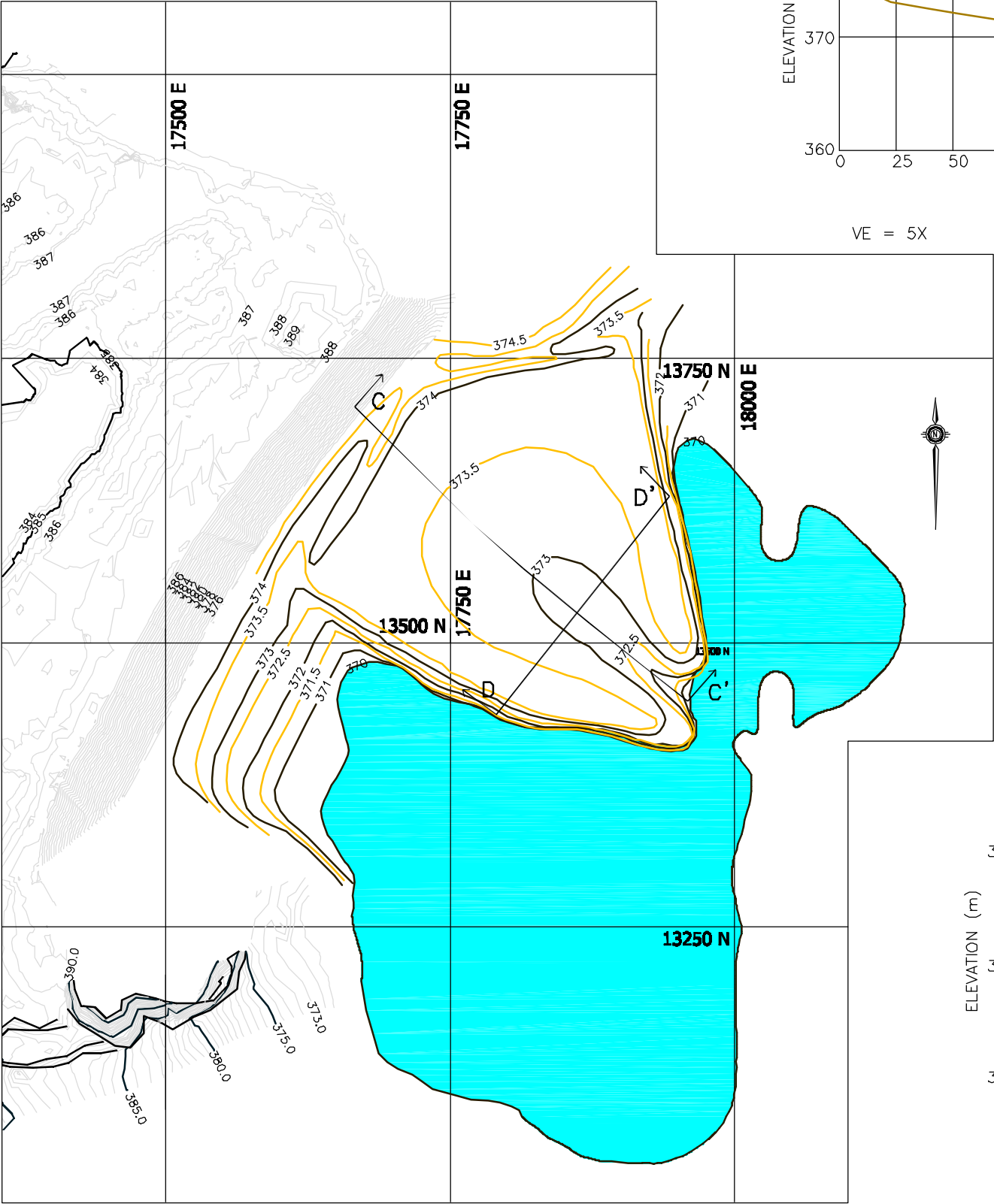


0255-008-09 014 FIGURE_20_1.dwg



CLIENT: NANISIVIK MINE
A DIVISION OF CANZINCO LTD.

LEGEND

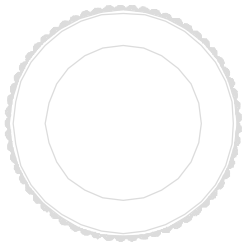
- CURRENT TOPOGRAPHY
- PROPOSED TOPOGRAPHY OF RECLAMATION COVER

- NOTES:
- CURRENT BATHYMETRY OF RESERVOIR FROM DRAWING New Final Bath V14.dwg SUPPLIED BY NANISIVIK MINE.
 - DETAILS REGARDING RECLAMATION OF RESERVOIR SHORELINE DISCUSSED IN WEST TWIN DISPOSAL AREA CLOSURE PLAN (G.15)
 - SEE FIGURE 21 FOR DETAILS REGARDING TOE PORTION OF RECLAMATION COVER.

AS A MUTUAL PROTECTION TO OUR CLIENT, THE PUBLIC AND OURSELVES, ALL REPORTS AND DRAWINGS ARE SUBMITTED FOR THE CONFIDENTIAL INFORMATION OF OUR CLIENT FOR A SPECIFIC PROJECT AND AUTHORIZATION FOR USE AND/OR PUBLICATION OF DATA, STATEMENTS, CONCLUSIONS OR ABSTRACTS FROM OR REGARDING OUR REPORTS AND DRAWINGS IS RESERVED PENDING OUR WRITTEN APPROVAL.

REV.	DATE	REVISION NOTES	DRAWN	CHECKED	APPROVED

SCALE:	AS SHOWN
DATE:	MAR 2004
DRAWN:	CJT
DESIGNED:	GKC
CHECKED:	JWC
APPROVED:	JWC



PROJECT WEST TWIN DISPOSAL AREA CLOSURE PLAN

TITLE PROPOSED RECLAMATION COVER GRADING PLAN
FOR TEST CELL AND TOE OF WEST TWIN DIKE

PROJECT No.	DWG No.	REV.
0255-008-09	20	0

**BGC ENGINEERING INC.**
AN APPLIED EARTH SCIENCES COMPANY

Calgary, AB Phone: (403) 250 5185